

ABS Plastic Solar Panel Mounting Kits

We introduce this range of solar panel mounting kits tailored to our 12V solar panels. Made of UV-resistant ABS plastic, these mounting kits not only offer a simple, stylish and cost-effective solution for providing solar panel with a safe and secure placement on caravans, campers, RVs, motor vehicles, boats, roofs and many flat surface applications, but also support solar panel at its optimal height above the surface to enable airflow underneath, ensuring solar panel functions as efficiently as possible. Better yet, a solar panel can be easily and conveniently mounted on these kits with glue, such as Sikaflex 252 or alike, no drilling required.



We offer two different mounting kits, which can be used in any combination to suit your specific application:

NETC ABS Plastic Solar Panel Corner Mounting Brackets, 4pcs per set

Pack of 4 corner mounts for supporting and protecting a solar panel at the corners: affix each corner of your solar panel to your desired mounting surface.

Dimension - 150 X 150 X 65MM

Color - White/Black

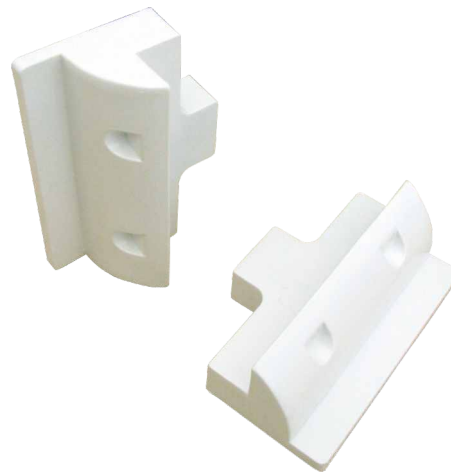


NETC ABS Plastic Solar Panel Side Mounting Brackets, 2pcs per set

Pack of 2 side mounts for additional support of a solar panel at the sides: depending on the size and weight of the solar panel and particularly if mounting the panel to a vehicle, it may worth considering the addition of a side mount pack for supporting the panel in the middle to reduce stress or for joining two panels together.

Dimension - 180 X 90 X 65MM

Color - White/Black



Key Features

- Can be safely bonded to the surface (metal, fiberglass, etc.) without the need to drill holes or damage on it, better than using metal mounts that are much heavier and need to be screwed or riveted to the surface
- Maintain adequate air gap between the solar panel and the surface and the curved design makes it as a wind deflector against high winds
- Virtually compatible with any-sized aluminum framed solar panels that have a side length of 150mm or more, ideal frame thickness is 30-50mm
- Protect the corners of solar panels from damage
- Quality ABS plastic, 100% recyclable and UV resistance, anti-reflective coating improves light absorption

Installation

You will need to drill a clearance hole in the ABS mounting brackets at appropriate recessed ports. Then attach the brackets to the solar panel frame using stainless steel or galvanized self-tapping screws. Apply glue like Sikaflex 252 to your brackets and install them to the pre-marked location where the solar panels will be mounted.

Dual Waterproof ABS Plastic Solar Cable Entry Box

Our aerodynamically shaped solar cable entry box is professional for solar panel installations to the roof or surface where you want the solar cables to enter and must remain waterproof.

At some point the solar cables need to enter into a vehicle, shed, marine boat or caravan roof and down to the battery area. To avoid making unsightly and potentially leaky cable entries, the solar cable entry box provides a weatherproof double cable entry to pass 1 or 2 cables from the roof to the interior battery area, suitable for cable up to 12mm.



NETC Dual Waterproof ABS Plastic Solar Cable Entry Box, 1pcs per set

Dimension - 100 X 90 X 50MM

Color - White/Black



Key Features

- Hides untidy holes and protects against leaks
- Professional glands, easy to install and keep water out
- Cable gland entry can accept and seal 1 to 4mm² core solar cables
- High quality ABS plastic, 100% recyclable and UV resistance

Installation

Drill out solar cable entry point on the roof or surface, and apply glue like Sikaflex 252 to your entry box and then install it to cover over the pre-drilled point. Once dry, pass the cables through the glands and tighten the lockrings to form two fully waterproof cable gland cable entries that look neat and purpose built.

To make your solar panel installation more complete and reliable, it is highly recommended that the neat solar cable entry box is used in conjunction with our solar panel mounting kits.

NETC Solar Panel Mounting and Fixing Kit Deluxe, 7pcs per set



We also offer a great variety of **Cables and Connectors** with the best quality and efficiency for 12V and DC applications. They include the 2~5m extension cable with alligator clamps or a cigarette plug, waterproof MC4 male and female connectors, and Anderson style plugs...



Alternatively, we provide **Solar Panel Z Mounts** (Set of 4) made of strong aluminum suitable for any of our panels (supplied with bolts). They're easily for fixing to bolted or screw surfaces and also cost-saving.

