

Universal Network Management Controller with LCD Touch Screen (10"/12")



Universal Network Management Controller with LCD Touch Screen

PLANET's NMS-1000V Network Management controller can directly monitor all kinds of deployed network devices without having to use an extra computer. However, the deployed devices, such as managed switches, media converters, routers, smart APs, VoIP phones, IP cameras, etc., have to be compliant with the **SNMP** Protocol, **ONVIF** Protocol and **PLANET Smart Discovery** utility. It thus enables the administrator to centrally manage a network of **up to 1024** nodes from a central office, greatly boosting network and power management efficiency. Through the intuitive touch panel, any network exception messages can be displayed in real time to greatly improve the work efficiency of network management personnel. With its user authentication management, the NMS-1000V enhances data transmission security in the modern factory automation systems.



Watch Over Network within Minutes

The domain information web page presents a managed devices list and topology view, providing the at-a-glance and efficient summary of your management network. It lets you have a valuable information on the current wired and wireless network statuses via data-driven graphical charts. The topology viewer and event reports enable you to visualize the system usage and node status in real time so as to address whatever issue they may have.

Industrial-grade Physical Hardware

- 2x10/100/1000BASE-T Gigabit Ethernet RJ45 ports
- 2xUSB 3.0 ports for configuration backup and restoration
- 1xaudio line out (reserve)
- 1xHDMI interface
- 2xDB-9 COM1,COM2 (reserve)
- 1x3-pin DC power input terminal
- 1x2-pin connector for power on/off button (reserve)
- VESA (100 x 100) panel mount

Network Devices Management

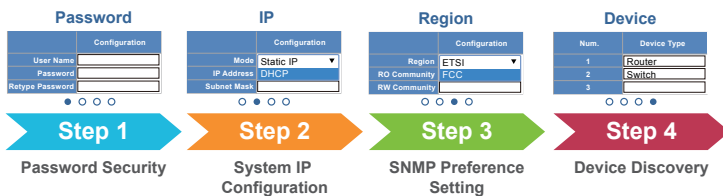
- **Dashboard:** Providing the at-a-glance view of system, device summary, traffic, PoE network status
- **Setup Wizard:** Easy to use step-by-step guidance
- **Node Discovery:** To detect PLANET managed devices available and allow AP grouping to accelerate AP management
- **Topology Viewer:** A topology of network devices compliant with SNMP, ONVIF, Smart Discovery and LLTD Protocol
- **Event Reports:** The status of a network can be reported via network alarm, system log
- **Alarm System:** Popup alerts and email alerts for the administrator via the SMTP server
- **Batch Provisioning:** Enabling multiple APs to be configured and upgraded at one time by using the designated profil.
- **Coverage Heat Map:** Real-time signal coverage of APs on the user-defined floor map to optimize Wi-Fi field deployment
- **Customized Profile:** Allowing the creation and maintenance of multiple wireless profiles
- **Auto Provision:** Multi-AP provisioning with one click
- **Cluster Management:** Simplifying high-density AP management
- **Zone Plan:** Optimizing AP deployment with actual signal coverage



User-friendly Setup Wizard

The NMS-1000V enhances user experience by providing more user-friendly wizard and obvious step-by-step guidance on each related function. Just like an app, it reduces training time and allows even non-technical users to be able to set up management network system within minutes.

Wizard Setup



Interactive Dashboard Shows Network Statuses in an Instant

The NMS-1000V's interactive dashboard includes local site network router, switch, access point statistics and WAN Traffic/PoE history graph. The administrator can quickly overview the status of device was online or offline. Through alert pop message window he can also find out system event on the touch panel, thus immediately knowing where the disconnection issue comes from.



- **Authentication:** Built-in RADIUS server seamlessly integrated into the enterprise network
- **User Control:** Allowing on-demand account creation and user-defined access policy
- **Scalability:** Free system upgrade and AP firmware bulk upgrade capability
- **Maximum Scalability:** 50 floor maps, 1024 nodes, 128 AP groups, 128 SSID profiles, 1024 managed APs, 20,000 clients, 20,000 RADIUS user accounts, 50 RADIUS user groups and 1024 RADIUS clients.

Network Management Characteristics

- Built-in DHCP Server
- Built-in RADIUS Server
- SSL secure access
- Web-based GUI management interface
- SNMP v1, v2c, and v3 management
- Supports PLANET DDNS/Easy DDNS

Real-time Centralized Monitoring with Pop-up Alerts and E-mail Alarm Function

As the NMS-1000V can come out with a topology view of the network of the deployed powered devices, it enables to detect which device is online (Green) or offline (Red). The real-time centralized monitoring of these devices can help the administrator know what the current statuses of these devices are. Pop-up alerts shown on the touch panel tell where the problems are. The e-mail alarm function is designed to send an email alert to the administrator via the SMTP server where syslog information can be found once an abnormality is detected. This can prompt the administrator to quickly fix the identified problem in the network.



Optimizing Wi-Fi Deployment with Floor Maps

With the floor maps, devices can be located according to the field deployment, thus saving your time and cost of on-site support and monitoring. The current statuses of devices are shown in real time and the heat map is able to show the wireless signal coverage and strength to help the administrator fine-tune the overlapping of the adjacent devices anytime to optimize the wireless network performance.



HDMI Screen Synchronization Projection and Remote Login

The NMS-1000V It supports HDMI interface that can easily connect to another bigger size screen, so that user can easy to monitor the network more clearly. It also can be operated from anywhere via Web browser to open more monitor screen that are able to access managed nodes on a DHCP-enabled network, thus controlling multiple devices through the other PC, laptop or tablet.

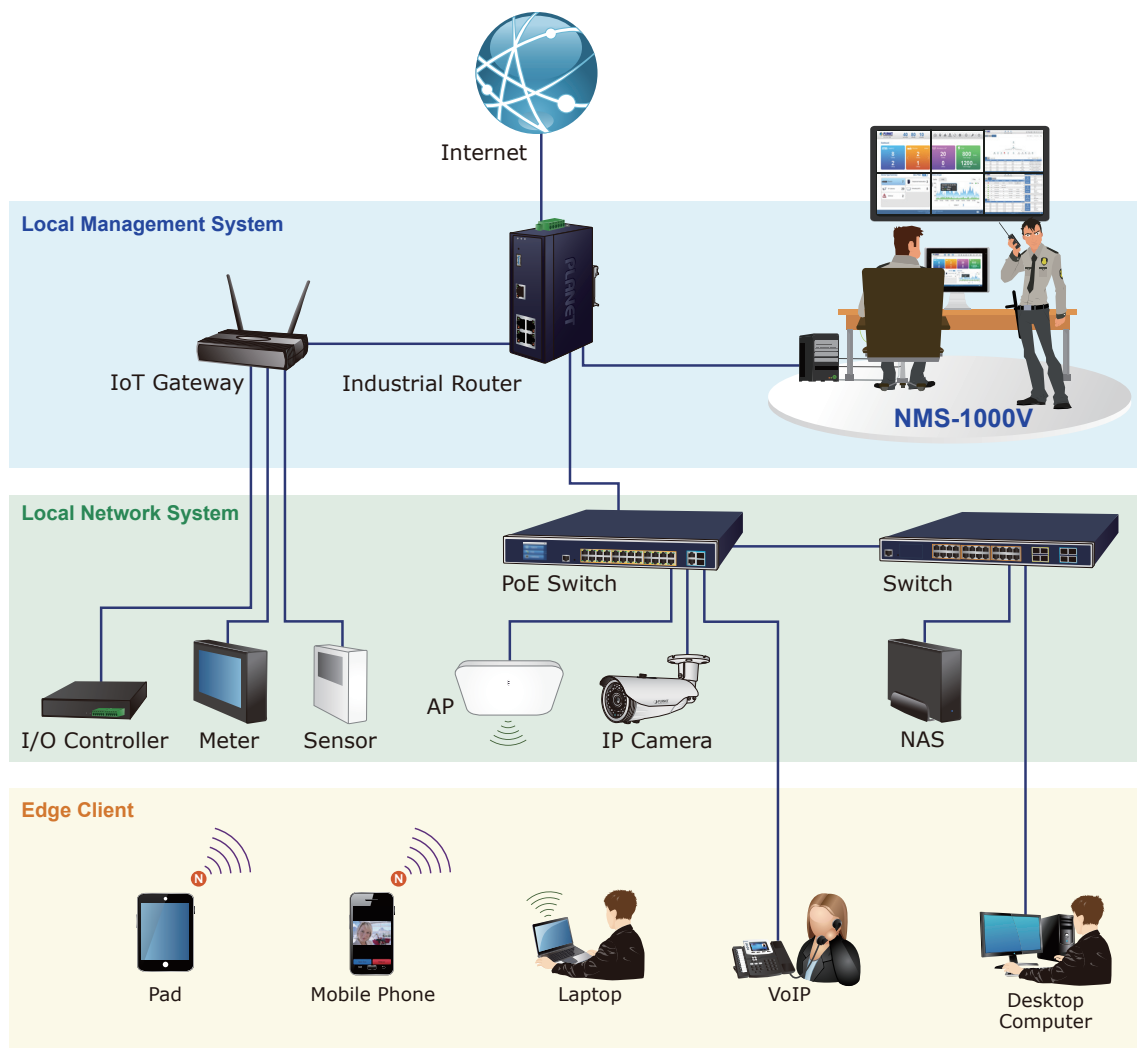


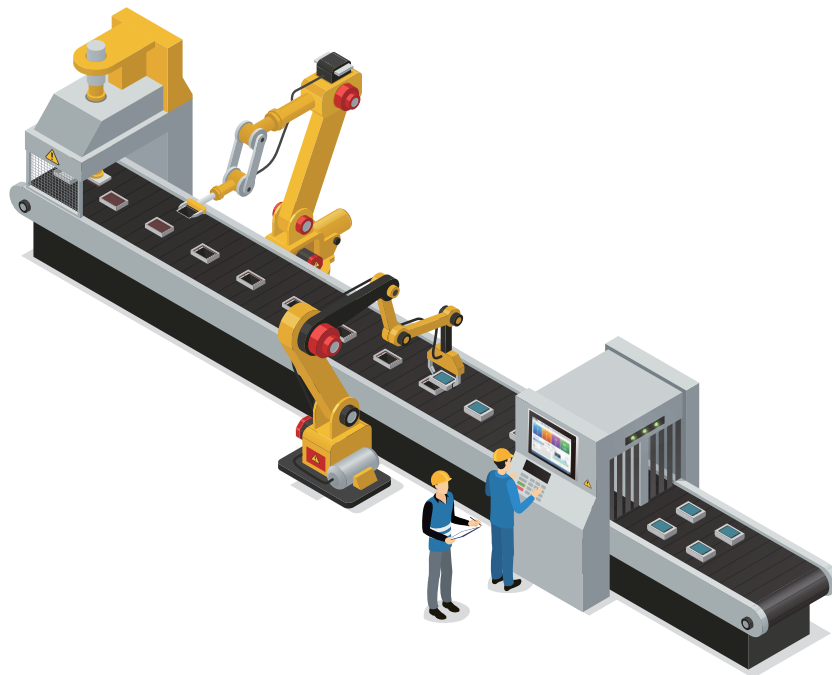
Applications

Economical Central Network Management Solution for SMBs

PLANET NMS-1000V helps service providers and IT managers control all PLANET network devices at the same time and enables administrator to effectively manage a local network of up to 1024 managed nodes simultaneously without having to purchase any license and hardware-based controller, and pay an expensive annual subscription fee.

The administrator can automatically discover and configure device profiles, batch provisioning/firmware upgrade, and built-in SAPC (Smart AP Control) that customize Wi-Fi planning against floor maps, and monitor all managed APs through a single Web-based interface. It allows operating across different platforms through virtualization software, which helps SMBs save costs on the need to configure the wireless APs one by one if done manually.





[Remarks]

Router: Log in to the router's Web user interface and **enable the SNMP** function.

Switch: Log in to the switch's Web user interface and **enable the SNMP and LLDP** function.

AP: Log in to the AP's Web user interface to **configure the AP to "Managed AP"**. In support of SNMP AP, **enable the SNMP** function.

IP Cam: The **ONVIF** function is enabled by default.

Specifications

Product	NMS-1000V-12	NMS-1000V-10
Form Factor	Panel Mount, VESA 100 x 100	
Hardware Specifications		
I/O Interface	2 10/100/1000BASE-T Gigabit Ethernet RJ45 ports	
	2 USB 3.0 ports (They cannot be used at the same time.)	
	1 Audio Line Out (reserve)	
	1 HDMI interface	
	2 DB-9 COM1,COM2 (reserve)	
	1 3-pin DC power input terminal	
	1 2-pin connector for power on/off button (reserve)	
Storage	2.5" 32G SATA3 HDD	
Touch LCD Size	12.1" TFT-LCD	10.1" TFT-LCD
Touch Type	Resistive Touch Window	
	Projected Capacitive Touch	
Display Resolution	1024 x 768	1280 x 800
Display Luminance(cd/m ²)	500	350
Display Viewangle(H°/V°)	160(H)/140(V)	160(H)/160(V)
Display Contrast	700:1	800:1
Display Backlight lifetime(hrs)	30,000 hrs	40,000 hrs
Light Transmission (%)	Resistive Touch Window: over 80%	
	Projected Capacitive Touch: over 90%	
Dimensions (W x D x H)	12": 319 x 51.7 x 245 mm	10": 285 x 49 x 189 mm
Weight	12": 2.9 kg	10": 2 kg
Enclosure	Aluminum Die-casting Chassis	
Power Requirements	DC IN 9~36V	
	60W adapter 12V 5A with terminal block	
	AC 100~240V, 2.0A, 60~50Hz.	
Environment & Certification		
IP rating	IP66 Compliant Front Bezel	
Temperature	Operating: 0 ~ 50 degrees C	
	Storage: -30 ~ 70 degrees C	

Humidity	10 ~ 90% relative humidity (non-condensing)	
MTBF (Hours)	100,000	
Network Management		
Number of Managed Devices	1,024	
Number of RADIUS Client Devices	1,024	
Number of RADIUS User Accounts	20,000	
Auto Discovery	Supports PLANET devices	
Dashboard	Providing the at-a-glance view of system, device summary, traffic, PoE network status	
Device List	Allows creation and maintenance of device profiles	
Topology View	Provides visual topology view of connected PLANET devices	
Status Monitoring	Real-time online/offline devices	
Event and Syslog Report	Real-time system event and syslog server supported	
Event Alarm Define	Allows event alarm item option	
SMTP Alarm	E-mail alert to the administrator via the SMTP server	
Popup Alert Message Window	Touch screen exclusive alert message window	
SSID/RF Profile	Allows creation and maintenance of multiple wireless profiles	
Cluster Management	Allows AP grouping for bulk provisioning and batch upgrading	
Bulk AP Provisioning	Supports bulk AP provisioning with user-defined profiles	
Bulk AP Firmware Upgrade	Supports bulk AP firmware upgrade	
Coverage Heat Map	Enables real signal coverage of managed AP reflecting on the uploaded zone maps	
Graphical Statistics	Real-time and historical visibility of wireless traffic flow	
Backup/Restoration	Provides system and profile backup/restoration	
SSIDs-to-VLANs Mapping	Allows to configure SSIDs-to-VLANs mapping in supported APs	
RADIUS Authentication	RADIUS server is integrated for client authentication in a large-scale enterprise network	
User Account Management	Supports on-demand account creation per user-defined access policy	
Network Services		
Network	DDNS	Supports PLANET DDNS/Easy DDNS
	DHCP	Built-in DHCP Server for auto IP assignment to APs
	Management	Console; Telnet; SSL; Web browser (Chrome is recommended); SNMP v1, v2c, v3
	Discovery	Supports SNMP, ONVIF and PLANET Smart Discovery
Maintenance	Backup	System backup and restore to local or USB HDD
	Reboot	Provides system reboot manually or automatically per power schedule
	Diagnostic	Provides IPv4/IPv6 ping and trace route
Standards Conformance		
Regulatory Compliance	CE, FCC	
Standards Compliance	IEEE 802.3 10BASE-T	
	IEEE 802.3u 100BASE-TX	
	IEEE 802.3ab Gigabit 1000BASE-T	

Ordering Information

NMS-1000V-10	Universal Network Management Controller with 10" LCD Touch Screen
NMS-1000V-12	Universal Network Management Controller with 12" LCD Touch Screen

PLANET Technology Corporation

11F., No.96, Minquan Rd., Xindian Dist., New Taipei City 231,
Taiwan (R.O.C.)
Tel: 886-2-2219-9518 Fax: 886-2-2219-9528
Email: sales@planet.com.tw www.planet.com.tw



PLANET reserves the right to change specifications without prior notice. All brand names and trademarks are property of their respective owners. Copyright © 2020 PLANET Technology Corp. All rights reserved.

NMS-1000V